

Picker's Paradise Camping (Expect After Midnight Jammin')	Information Booth (Lost & Found, Help, Flyers)
Quiet Camping (Quiet between 10PM and 8 AM)	First Aid Tent
Accessible Camp/Seating (Accessible Transport Provided)	Bus Stops
Artist/Sponsor Areas (Auth. Camping & Parking)	Accessible Facilities
BGA & Family Camping (Near PP - NOT a Quiet Area)	Public Pay Phone Phone Charging
Electricity Supplied Electrical Hookup Area	Security
Generatorville (RVs and Generator Area)	Potable Water Spigots (Please - washing or brushing teeth at spigots is strictly forbidden by health dept.)
Admin. Office Public Access / Cust. Service	

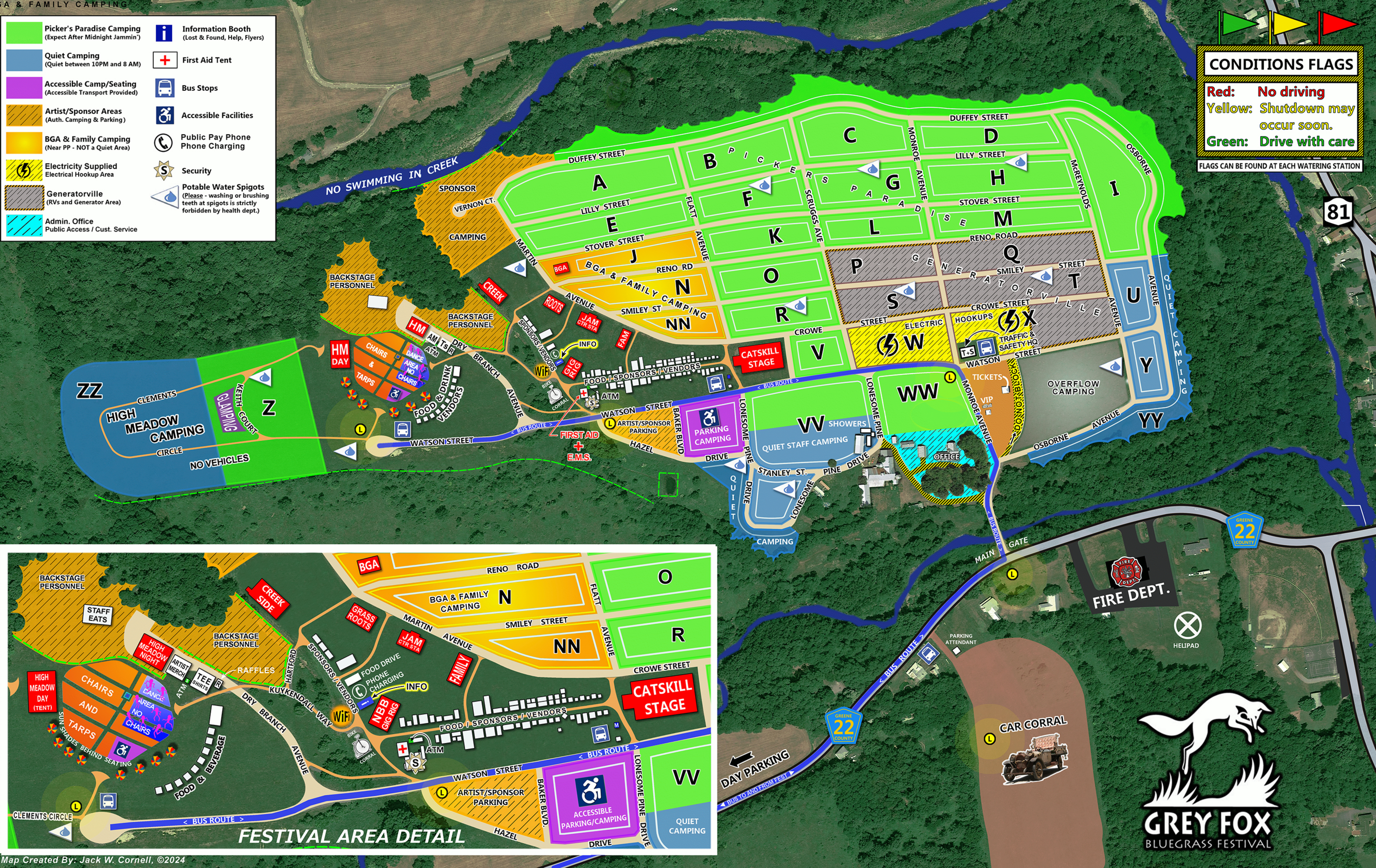
CONDITIONS FLAGS

Red: No driving

Yellow: Shutdown may occur soon.

Green: Drive with care

FLAGS CAN BE FOUND AT EACH WATERING STATION



FIRE DEPT.

HELIPAD

CAR CORRAL

GREY FOX
BLUEGRASS FESTIVAL